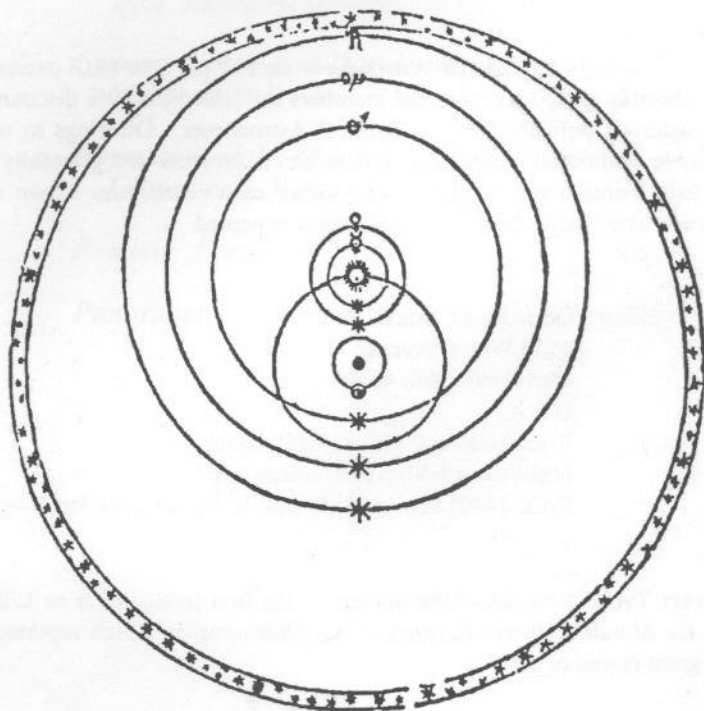


THE
BIBLICAL
ASTRONOMER

SPRING 1999

*NOVA MYNDANI SYSTEMATIS HYPOTHOSIS
ab Authore nuper adinuenta, quatum vetus illa Ptolemaica
redundantia & inconcinnitas, tum etiam recens Copernicana
in motu Terra Physica absurditas, excluduntur, omniaq;
Apparentiu Caelestibus aptissime correspondent.*



Subscriptions to the *Biblical Astronomer* are \$12 per year (\$15 overseas). Membership is \$20 per year and members are allowed a 20% discount on all materials published by the *Biblical Astronomer*. Offerings to make possible additional publishing and research projects are gratefully accepted. Foreign orders please send either cash or cheques drawn on a United States bank. Sorry, no credit cards accepted.

Editor: Gerardus D. Bouw, Ph.D.

4527 Wetzel Avenue
Cleveland, Ohio 44109
U.S.A.

E-mail address: gbouw@stratos.net

<http://www.biblicalastronomer.org>

FAX: (440) 826-6973 Be sure to mark it attn: Dr. Bouw

Cover: Tycho's model of the universe. He first published it in 1588 in his *De Mundi Aetherei Recentioribus, Phaenomenis* which reported on the great comet of 1577.

**THE
BIBLICAL ASTRONOMER**

Volume 9, Number 88
SPRING 1999

TABLE OF CONTENTS

<i>Introduction</i>	3
<i>Levitating and Moving Large Stones</i> Prof. James N. Hanson	6
<i>Copernicanism and Darwinism</i> Marshall Hall	14
<i>Formation of the Moon</i> Gerardus D. Bouw	22
<i>Readers' Forum</i>	26
<i>Panorama</i>	29

XXXXXXXXXXXXXXXXXXXX
XXXXXXXXXXXXXXXXXXXX
FAX: (407) 253-1234

XXXXXXXXXXXXXXXXXXXX
XXXXXXXXXXXXXXXXXXXX
XXXXXXXXXXXXXXXXXXXX

INTRODUCTION TO THIS ISSUE

Rather than call this an editorial, I think it more descriptive to call it an introduction. In the past I've used the editorial to describe and summarize the contents of that particular issue, and I have not always used this to present a personal view. Not that I am short of opinions, mind you. So let's summarize the contents and make our announcements.

New Videos

The Biblical Astronomer is releasing two video tapes (American VHS only). One has never before been released and the other has been signed over to the Biblical Astronomer. The two tapes are called *The Creation of the Universe* and *Dr. Arthur Sharron Interviews Dr. Gerardus Bouw On Thinking Psych-economically*. Here is a brief description of each.

The Creation of the Universe is a tape made at the Twin-Cities Creationism Conference in 1992. At the conference Dr. Bouw presented a paper entitled "A Creationist Scenario for the Creation of the Universe." The printed version of that paper was published in the *Biblical Astronomer* in 1997, issue no. 79, p. 10. On the tape Dr. Bouw presents a possible scenario for the events of the creation week, a scenario which can account for the observed properties of the universe under a minimum of assumptions. For example, in Dr. Bouw's model the craters of the planets and moons are due to the conditions of creation and do not need to postulate any problematic "cloud" of asteroids spanning the entire solar system, a "cloud" for which no direct evidence persists to this day.

The "Thinking Psych-economically" tape was made by Dr. Arthur Sharron, a Jewish Christian and an economist who has a cable television program in the Los Angeles area. The tape contains two programs, the first entitled "The Scientific Inerrancy of Scripture" and the second entitled "Geocentricity and the Decline of Biblical Authority." This June, 1996 video was shot in a studio with a professional camera crew.

The videos are \$20 each, postpaid, or if ordering both at once to the same address, the cost is \$30 postpaid. Lord willing, we will release additional video tapes over the coming months.

Levitating and Moving Large Stones

This issue also finds the publication of a paper entitled "Levitation and Moving Large Stones by Ambient Electromagnetic Fields Prevalent After Noah's Flood." This paper, by Cleveland State University Professor Emeritus, James N. Hanson, was written more than 20 years ago and was submitted and rejected by several Creationist technical journals. Although rather technical, we've chosen to publish it here, at this time. (Readers from issue no. 86 will recall that the trade-off for "late" issues would be articles of greater depth and quality.)

Some readers will skip over the math, and there is nothing wrong with that. Indeed, most technical articles can be read by laymen if they ignore the equations, for a good technical writer will usually explain in plain English what the equations mean. I provide a brief summary here.

In the paper Professor Hanson assumes that after the flood, thunder and lightning persisted in great intensity until the earth was totally dried. It is well observed that the magnetic field of the earth was also much stronger then than it is presently. These two things, huge thunderbolts and a strong terrestrial magnetic field could be harnessed to move huge stones such as those used in making the pyramids or, possibly, the stones used to build the Tower of Babel. Prof. Hanson explains how those powers could be harnessed, and shows via the equations that, given his assumptions of the conditions after flood, the thing is possible.

Copernicanism and Darwinism

In this article popularist Marshall Hall debunks the claim that the geocentric debate is completely separate from the creationist debate. This claim is often made by creationists who wish to distance themselves from the "foolishness" of the geocentrists. Mr. Hall shows that without heliocentrism (the Copernican Revolution), there would be no "theory" of evolution.

The Formation of the Moon

The article entitled "The Formation of the Moon" shows that astronomers still have no viable theory for the creation of the moon. The article critiques a NASA press release from March 16, 1999. In that

press release NASA claimed that they had "new evidence" that the moon was torn from the earth by a passing asteroid the size of the planet Mars. On the other hand, as the article points out, the evidence just as well supports the creationist scenario presented by Dr. Bouw in the video tape and article mentioned above.

Finally there is a letter to the editor concerning the star of Bethlehem paper which appeared in the Fall 1998 issue and the Panorama column. The latter looks at evidence that the traditional date for the supernova which created the Crab Nebula is wrong. It also looks at forensic evidence in the death of Tycho Brahe, the geocentrist astronomer who employed Kepler and charged him with publishing his geocentric model. Lastly we look at an alleged refinement of the Hubble constant on which the expanding universe model (big bang theory) is based. The news is not all that good for the evolutionary astronomers.

LEVITATING AND MOVING LARGE STONES BY AMBIENT ELECTROMAGNETIC FIELDS PREVALENT AFTER NOAH'S FLOOD

James Hanson

10080 Waterford Trail
Chagrin Falls, Ohio 44023

Abstract

It is suggested that in the centuries following Noah's flood, transient conditions, not in evidence thereafter, would produce large amounts of ambient charge which would give rise to electromagnetic fields which in turn could be tapped so as to move large objects (especially stones) that had been highly charged, and that man had learned to harness these conditions.

Introduction

In the *Bible Science Newsletter* of August 1975 I suggested that the pyramids of Egypt were not quarried and then laboriously sledged many miles and finally lifted to their place by means of an incline, but instead, were conduited and poured into forms just as many concrete buildings of today are constructed. Such an unorthodox suggestion precipitated substantial contrary response. However, I was eventually vindicated twelve years later with the publication of *The Pyramids: An Enigma Solved*, by Davidovits and Morris (Hipocrene Books, NY, 1988). Dr. Davidovits is a chemist specializing in concrete. The authors produce much evidence for showing that the pyramids were poured.

Whereas Dr. Davidovits argued from chemistry and concrete mechanics, I argued from the Bible. It seemed to me that the book of Job alludes to pyramids and also gives eyewitness descriptions of the ambient conditions in the first few centuries after the flood of Noah. I therefore reasoned that the immediate post-flood population would utilize and harness natural conditions as they found them. Specifically, it might have been at the site of the Tower of Babel and in the pyramid region of Egypt

that a super abundance of natural liquid concrete was available, having been deposited by the flood and in the process of drying out. Perhaps this drying out period lasted centuries due to rainy conditions that succeeded the flood. This natural liquid concrete could be transported by a network of sluice troughs.

In the ancient world there is indeed evidence of quarrying. The pyramids have lintel stones that are of hard granitic rock. Building sized foundation stones at Baalbeck have been quarried and moved many miles. Megalithic monuments as Stonehenge have been cut out and moved great distances. The same maybe said of ancient walls and monuments in Central and South America.

I wish to suggest a method whereby gigantic stones might have been moved. Whereas, after the flood man would most certainly utilize mud and natural concrete for building, he would also utilize the intense electrical environment that may well have attended the post flood centuries wherein colossal storms, lightning, and rain would be common and whose intensity might have dwarfed the conditions as they exist today. Man faced with such an environment would surely figure a way to use it to his advantage.

Let us assume that man in the post flood era had a highly developed technology of capacitors and that he could summon charge from the sky at will. Very many lightning rods wired to capacitors affixed to a large stone might result in charges of 10^5 to 10^7 or more coulombs. In somewhat the same manner he would be able to sustain enormous currents of millions of ohms through conductors of various designed shapes. These conductors would be placed near the highly charged stone and would exert both a magnetic and electrical force, thus causing it to levitate and move.

By controlling that charge Q , on the stone, the current, I , through the conductors, and the conductors orientation, and electric field, E , and a magnetic field, B , would be produced so as to steer the stone, especially to lift it. The total force produced is given by $F = Q(V \times B + E)$ where V is the velocity of the stone. It is even possible that both positive and negative charges could have been manipulated as with a van de Graaf generator.

Post Flood Climatic Conditions

The earth's magnetic field strength is about 0.3 Weber pointing

roughly north-south and roughly parallel to the earth's surface. This is the case for the Bible lands now and we might assume this to have been the case there after the Flood about 2400 B.C. (2348 B.C., Ussher). However, the magnetic field strength has decayed exponentially with an half-life of about 1400 years. Thus after the flood, the magnetic field strength was 2.4 Weber. The earth's component of the total magnetic field cannot be altered or turned off, but its effect may be nullified or dwarfed by field strengths arising from controlling atmospheric electricity.

Lightning strokes may move from cloud to ground, ground to cloud, or from cloud to cloud and accompany cumulonimbus and nimbostratus clouds, active volcanoes, snowstorms, and dust storms. Potentials of 10^8 volts and currents of 10^5 amps are observed. Lightning strokes can tear away blocks weighing tons and hurl large stones substantial distances. Charge transfers of 10^3 coulombs are observed. In the post flood world these numbers might have been many orders of magnitude larger due to the more tumultuous climatic conditions. Martin A. Ullman's *Lightning*, (Dover Publications) provides much data and theory on lightning. Also see *The Lightning Book*, by Peter Viemeister, MIT Press.

Herodotus (484-425 B.C.), writing about 2,000 years after the flood, reports on the climatic conditions in early Egypt and upon the construction of the pyramids. He cites earlier authorities showing parts of Egypt and Libya yet underwater, and large parts of Egypt yet marsh and mud, and that the Nile seemed to have flowed into the Red Sea. He claims barges and dragging were used to move the pyramid stones.¹

Conductor Geometry

We see from $F = Q(V \times B + E)$ that $QV \times B$ gives maximum lift when the direction of motion is perpendicular to the directions of the magnetic field and V and B , B also lying parallel to the earth's surface. Also, E should point upward. A long straight-line horizontal conductor would accomplish this where $E = k \lambda r^{-1}$ and where the direction of E is vertical (perpendicular to the conductor) and where λ is the charge per unit length, r the distance from the conductor to the moving object, and the

1. A. D. Godley's translation, 1966. *Herodotus*, (Harvard University Press).

constant $k = 9 \times 10^9$ newton-meter²-coulomb⁻². The associated magnetic field is horizontal and is given by $B = \mu I (2 \pi r)^{-1}$ where $\mu = 4 \pi \times 10^{-7}$ weber-amp⁻¹-meter⁻¹. The presence of a circular conductor (radius = a) might prove useful in tailoring the appropriate E and B . In this case E and B are perpendicular to the plane of the circle and have magnitudes

$$E = k Q r(r^2 + a^2)^{-3/2}$$

and

$$B = 0.5 \mu I a^2(r^2 + a^2)^{-3/2}.$$

The Motion

The equation of motion for our moving stone is

$$m(\ddot{\vec{x}}, \ddot{\vec{y}}, \ddot{\vec{z}}) = Q((\dot{\vec{x}}, \dot{\vec{y}}, \dot{\vec{z}}) \times (B_x, B_y, B_z) + (E_x, E_y, E_z)) - mg(0, 0, 1)$$

where m is the stone's mass in kilograms and $g = 9.8$ meter sec.⁻² is the acceleration due to gravity. In order to simplify the analysis let B and E be constant (i.e. not dependent upon r) and confine the motion to the x, y plane. Set $B_z = 0$, $B_y = B$ and $E_y = 0$. Let the z axis point to the zenith, and use initial conditions $x(0)=0$, $\dot{x}(0)=\dot{x}_0$, $z(0)=0$, and $\dot{z}(0)=\dot{z}_0$. The solution is found to be

$$x(t) = A^{-1}(C_1 + C^2t + C^3 \sin(At + \beta_x))$$

$$z(t) = A^{-1}(D_1 + D^2t + D^3 \sin(At + \beta_y))$$

where $A = QB/m$ and

$$C_1 = A^{-1}C_x - \dot{z}_0$$

$$C_2 = -A^{-1}C_z$$

$$C_z = m^{-1}(QE_z - mg)$$

$$D_1 = A^{-1}C_z + \dot{x}_0$$

$$D_2 = A^{-1}C_x$$

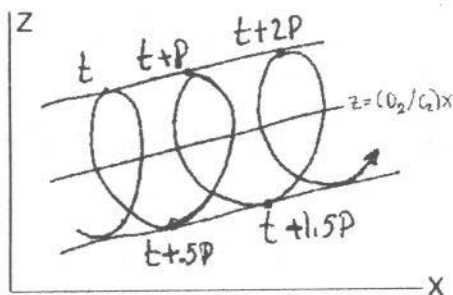
$$C_x = m^{-1}QE_x$$

$$C_3 = D_3 = A^{-1}((\dot{x}_0 + A^{-1}C_z)^2 + (\dot{z}_0 - A^{-1}C_x)^2)^{1/2}$$

$$\beta_x = \tan^{-1}((\dot{x}_0 + A^{-1}C_z)/(\dot{z}_0 - A^{-1}C_x))$$

$$\beta_z = \tan^{-1}(-(\dot{z}_0 + A^{-1}C_x)/(\dot{x}_0 + A^{-1}C_z))$$

Qualitatively this motion is as shown below



The maxima and minima of the motion occur when $dz/dx = z/x = 0$, i.e., at

$$t_m = A^{-1}(\cos(-C_x/(AD_3)) - \beta_z \pm n\pi), \quad n = 0, 1, \dots$$

The period P (time between successive maxima or minima) is obtained by subtracting t_m for n from t_m for $n+2$,

$$P = 2\pi A^{-1} = 2\pi m/(QB).$$

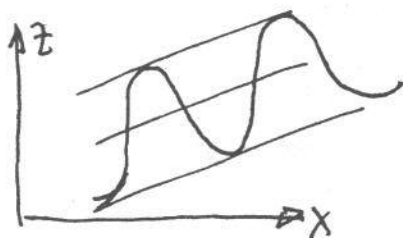
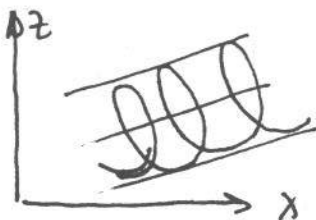
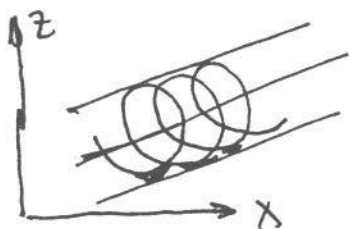
The amplitude of the sinusoidal component is approximated by D_3 and the slope, α , of the mean motion is D_2/C_2

$$\alpha = D_2/C_2 = -QE_x/(QE_z - mg)$$

Recall that Q , E_x , and E_z may be positive or negative. From the expression for α it is seen that in the absence of an electric field the motion would be looping but with no net change in z over time. However, if $QE_z = mg$ then the looping rises along the z -direction with no net change in x .

Analysis of Motion

The looping may overlap or be strung out as shown on the next page. The motion may proceed from left to right or right to left. It may show a net up or down motion. It might be advantageous to use only a portion of a loop and to forego the linear component so that the B and E fields would have needed to be maintained for a short period of time, say on the



order of a second. In this manner mainly vertical motion would be realized (see figures on the next page).

In the two cases shown, t_1 is near the bottom of the loop at which time E and B are turned on and t_2 is near the top of the loop at which time E and B are turned off, thus landing the stone at (x_1, z_1) and realizing a levitation of $z_1 - z_0$. A terminal velocity, v_1 , would have to be accommodated.

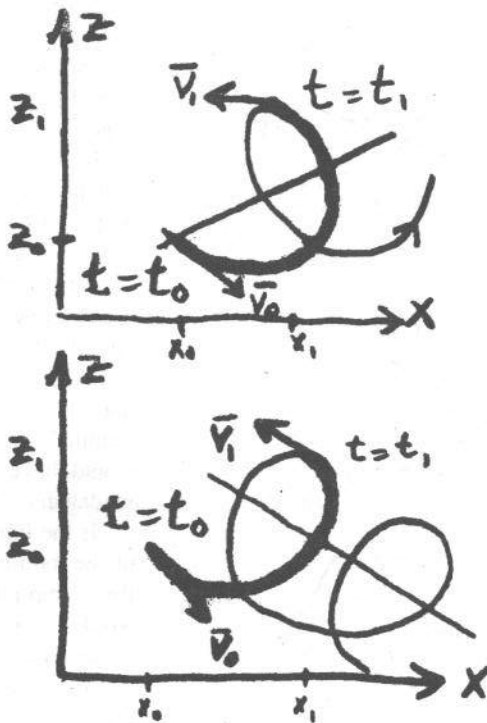
If the linear component of the motion is small then the amplitude of $z(x)$ would be well approximated by the amplitude D_3 of $z(t)$. In order to apply numbers to the formulae let the same assumptions and approximations be employed,

$$D_3 = (m/QB)[(\dot{z}_0 - E_x/B)^2 + (\dot{x}_0 + E_z/B - mg/QB)^2]^{1/2}.$$

Let \dot{x}_0 and \dot{z}_0 be small, $E/B \gg 1$, $E_x = E_z = E$ and set $mg/QB = 1$, then

$$D_3 \sim 0.14 E/B$$

which for $E = 10^6$ volt-meter⁻¹ and $B = 10^4$ Weber-meter⁻² gives $D_3 \sim 14$ meter which for a charge $Q = 10$ coulomb accommodates a mass $m = 10^4$ kilograms. The associated linear slope and period are $\alpha \sim 0.6$ and $P \sim 1$ second.

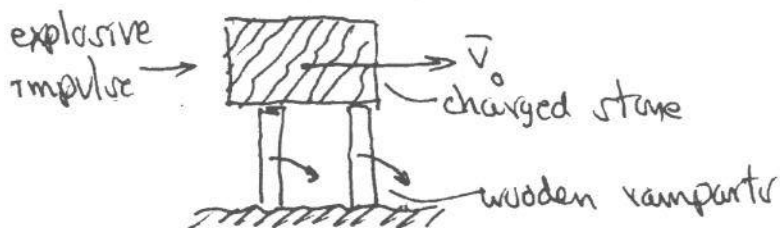


Initial Conditions

For B to act on the stone initially, \dot{x}_0 and \dot{z}_0 cannot be zero. Hence it would be advantageous to make \dot{x}_0 as large as possible. Perhaps the stone could have been cast down as indicated by the direction of v_0 in the last figure. The stone must have been mounted on a nonconducting mount such as a wooden support (see figure on page 13).

If the ramparts were caused to fall then an initial velocity parallel to the ground results. Once in motion the effect of B begins to act. Of course, the action of E is always present, not being dependent upon the motion of the charged stone.

If, indeed, natural electricity were summoned at will in those times, it might have been a large part of v_0 were caused explosively. IF a very large pulse of lightning were directed so as to dissipate its energy in



water contained in a cylinder, then the water would explosively turn to steam which could impact against the stone. Lightning strokes presently dissipate 10^5 joules or more. Let W be the energy in a lightning stroke and let this energy be perfectly converted to kinetic energy of the stone, then

$$W = mv_0^2/2 = m\dot{x}_0^2/2$$

Using our test figure of $m=10^4$ kilograms, and setting $W=10^{10}$ joules we obtain $\dot{x}_0=10^3$ meter-second⁻¹. One might even speculate that they had the ability to produce and control ball lightning. Many have witnessed how a small ball of lightning has instantaneously converted a barrel of downspout water to steam.

COPERNICANISM AND DARWINISM INSEPARABLE CONCEPTS

Marshall Hall¹

On a cassette tape, Dr. DeYoung, an anti-geocentrist "Creationist" says that everybody should "understand that the Geocentric/Heliocentric controversy is completely separate from the Creation/Evolution controversy." Some reasons why this is the exact opposite of the truth are presented below.

1) Secular Authorities Beg To Differ

The Scope's Trial record shows clearly that Bryan's adversaries knew full well that Copernicanism and Darwinism were inseparable concepts. The comparison was "used to flog Bryan" several times and always to good effect for the evolutionists.²

Besides this, all major encyclopedias and historical references recognize the ineffably great impact the Copernican Revolution had on the course of history, the status of the Bible, and the direction of science. That revolution turned all knowledge up-side down, just as a counter-revolution against Copernicanism will turn all knowledge "up-side down" again, back right-side up! The main change caused by the Copernican Revolution was the acceptance of the belief that "science" had disproven the Bible. And, if the Bible could be wrong about the earth not moving, it could be wrong on other aspects of the creation, on Noah's Flood, the virgin birth, Heaven ... *anything!*

Thus, the Copernican Revolution began a process of replacing the Bible with "science" as the new source of Absolute Truth. Religion, business, politics, science, art, indeed everything, had to get a new philosophical basis as "science" dethroned the Bible with Copernican heliocentrism. This new mindset was indisputably foundational for the

1. Adapted from <http://www.fixedearth.com> web site.

2. Ray Ginger, *Six Days Or Forever?* Oxford U. Press., p.125.

success of the Bible-denying evolutionism which was the next thing the Devil was to send down the road, attired fetchingly as "science." First infiltrate the physical "sciences," then the life "sciences."

Once understood, denial of the symbiotic relationship between Copernicanism and Darwinism can only exist through willful blindness of historical and spiritual facts. This blindness is often coupled with pleas that the focus has to be kept on evolution, ignoring the fact that the two are fundamentally inseparable. This is a blindness that can no longer be dismissed with a shrug amongst undeviating Bible Creationists today. It is a blindness that is the root of all modern Bible-bashing. Christians cannot continue to disregard and minimize this fact and be indifferent toward it. Satan seemingly has been allowed to trick even the very elect on this one; and now God is calling His own to take back that which was stolen.

2) Kepler, Galileo, and Newton Proved Nothing

Called "giants" who refuted geocentrism on the tape, Kepler, Galileo and Newton did no such thing. [Newton himself never claimed to have any proof for or against heliocentrism—*Ed.*] But, in a spiritual sense, they are still giants, to be sure. They are the "giants in the land" that today's Joshuas and Calebs amongst honest folk everywhere are called by God to expose, knock off their pedestals, and drive out of the land which they helped fortify against Bible Absolutism!

Take Kepler, of whom it is said: "...the question of life's origin on earth fascinated Kepler.³ And "adaptation of species...seemed as logical to Kepler as it did to Charles Darwin over two centuries later when Darwin began to put together his theory of evolution."⁴ So we see here a clear and remarkably early connection of heliocentrism and evolutionism in the mind of this "giant" of the Copernican movement. Moreover, it is well established that Kepler believed there were evolved life forms on the moon.⁵ How is it then that this precocious evolutionist is acclaimed by

3. John Lear, *Kepler's Dream*. (Full text and notes. U. of CA, Berkeley and Los Angeles, 1965), Footnote, p.7.

4. *Ibid.*

5. *Ibid.*

Creationists today as a great man of God?

Indeed, who is this Copernican-evolutionist Kepler that the Institute for Creation Research (ICR) now lionizes with a book, and whom Dr. DeYoung calls a "giant" who helped slay geocentrism)? Well, Kepler's lineage and career are certainly of interest to any serious Bible lover. Note these factual tidbits:

- His grandmother was raised by a "kinswoman who had been executed for witchcraft".⁶
- His mother had forty-nine counts of witchcraft officially brought against her.⁷
- In January, 1616, officials in Wurttemberg charged Johannes Kepler himself with practicing "forbidden arts", i.e., witchcraft.⁸
- Kepler studied for the Lutheran Clergy, but was always wrangling with the church authorities and was never allowed to have a pulpit.⁹
- The pastor at Linz wouldn't allow Kepler to take communion.¹⁰
- While a university student in the late 1500's, Kepler wrote a wild story about demons taking people to the moon so they could watch the earth rotating.¹¹
- Kepler got into a partnership with Tycho Brahe, the dean of astronomers at that time, who was a bulwark against the rising Copernican heresy. Brahe died rather suddenly (and conveniently for the Copernican movement) pleading with Kepler not to use his work to further Copernicanism (which plea was ignored, of course).¹²

6. *Ibid.*, p. 3.

7. *Ibid.*, pp. 31 and 35. For details see Marshall Hall, *The Earth Is Not Moving*, Fair Education Foundation, Inc., 1991, Cornelia, GA pp.44-63.

8. *Ibid.*, p. 34.

9. *Ibid.*, p. 4.

10. *Ibid.*, p. 33.

11. *Ibid.*, p. 5.

3) Church Leaders Opposed Copernicanism

Both Protestant and Catholic church leaders remained officially opposed to Copernicanism for at least 150 years until Newton's *Principia* was published in 1687. Then they began to waffle. Still, there were plenty of holdouts through the next century and into the 1800's. The Roman Catholic *Index* didn't delete Copernicus's book until 1835. Scattered books and protests even continued until about the First World War, then virtually died out, and only in recent years have begun to be seen and heard again. Though Newton's book certainly did not prove Copernicanism, it incorporated some new abstract mathematics which served that purpose and rapidly gained acceptance at the universities (just like Darwinism later).

Mathematics, utterly abstruse and esoteric, now became the primary instrument in the hands of Copernicans. The secular science establishment used this new priesthood of mathematicians to soften up the universities first, and then the churches. Thus was the way prepared for the acceptance of some real Bible-bashing by the coming "scientific" substitute for the six-day Creation of man and all else, viz., evolutionism.

4) The Effect on Philosophy

Once Satan's counterfeit of God's Truth of an earth-centered geocentric universe gained control of "higher" education, the way was clear to foist his evolutionary counterfeit into the corridors of academia *with very little opposition!* The real spade work had already been done! Copernicans Voltaire and Erasmus Darwin (Charles' grandfather) were developing "ape-man" theories in the 1700's. By the time lawyer Sir Charles Lyell came along with his uniformitarian geology in 1830, evolutionary ideas were fermenting and fomenting in many universities, awaiting only Darwin's "natural selection" mechanism to uncork the bottle. Does it surprise anyone that the earliest proselytizers of evolutionism were avowed Copernicans, having just received that great quantum leap in "wisdom" from their grandfathers? I can find none.

12. *Ibid.*, p.7. Also see Fred Hoyle, *Astronomy and Cosmology*. W.H. Freeman and Co., San Francisco, 1975, p.416.

What I do find, is that philosophers and other intellectuals, all Copernicans from Descartes, Spinoza, and Leibniz through Kant and Hegel et al., and on to Schopenhauer and Nietzsche, had established the heliocentric cosmology so solidly over a 300 year period in the universities and publication circles that even the famous scientist von Humboldt was cowed into silence. Just before Darwin's book came out in 1859, Humboldt said: "I have known too for a long time, that we have no arguments for the Copernican system...." Still, fear of "scorn of a thoughtless multitude" prevented him from saying anything.¹³

Thus, secure from any "credible" attack on their Copernican "science" front, the new Darwinian "science" offensive could then link hands with that "established scientific truth" and forge boldly ahead toward the goal of pushing the Bible completely off stage as a repository of Truth. In all this, as many of you know, Ernst Haeckel was a powerful force early in the establishment of Darwinism. This biographical note about Herr Haeckel succinctly tells what happened and why it happened: "Ernst Haeckel wedded the idea of classical physics [Copernicanism] with the new Darwinian history of nature to form a comprehensive materialist cosmology, or 'anti-theology'..."¹⁴

This "comprehensive materialist cosmology" is what Creationists today are up against and, excepting a handful, they do not know it! Evolutionism does **not** stand alone as a Bible-wrecking, contra-scientific deception, Satanically conceived. Evolutionism is historically, philosophically, scientifically, and spiritually wedded to a previously conceived Bible-wrecking, anti-scientific deception called Copernicanism! The Creation "movement" today denies or ignores this wedded union and thus is not 1/50th the threat to Satan's kingdoms in this world that it can and should be. Fellow Creationists: It's wake-up time!!

There was another "-ism" that was born out of the Copernican mindset but was floundering until evolutionism began to take hold. That was Communism. As evolutionism sank securely into university curricula (and was soon augmented by evolution-based Freudianism in the behavioral "sciences"), Marxist Communism took on new life and in a

13. C. Schoepfer, *The Earth Stands Fast*. (Charles Ludwig, Printer, N.Y., 1900), p. 59.

14. *Encyclopedia Britannica*, 1976 edn., Vol.16, Macropedia; p. 380.

mere generation and a half had conquered Russia. So an officially atheistic state was established which was referred to in the early days as the application of "Scientific Socialism" to government and economics. What was this "scientific" base anyway?

Well, most Creationists know by now that biological evolutionism is an indispensable foundational principle of "scientific socialism" (which includes not only Communism, but the infinitely more slinky idea of "humanism"). Most have heard that, after reading Darwin, Marx said: "This is the book which contains the *basis in natural history* for our view."¹⁵ When Marx finished his first volume of *Das Kapital*, he offered to dedicate it to Darwin. Darwin's book had given God "the death blow," he exulted to LaSalle. What he and Engles et al. had created out of the anti-Bible secular philosophy made possible by the triumph of Copernicanism in the physical sciences, was now certified by Darwin in the natural sciences! Atheistic Communism was now fully equipped by both the physical and natural sciences to conquer the world with a political and economic system which openly stated that Bible Christianity was moribund at last and would soon be put out of its misery by an enlightened "science"-based movement. The philosopher Nietzsche boasted in the 1880's: "God is dead; we have killed him with our science!"

While knowledgeable Creationists have known about the Communist-Socialist-Humanist dependency upon evolutionism, they have not generally known or thought about the Copernican connection to the same "-isms". It is now time to understand this connection! *It is now time to recognize how Copernicanism paved the way for the acceptance of Darwinism, and how Darwinism, in turn supplied the basis for conquest of the social and behavioral "sciences," the Arts, Mathematics, and Religion.* It is time to understand that Communism and Humanism are equally dependent upon that other foundational "scientific" principle that goes hand in glove with evolutionism. That pre-evolutionary principle was and is Bible-bashing Copernicanism.

Does someone say they aren't convinced that the very heartbeat of Communist and Humanist ideology is the anti-Bible moving earth concept we call Copernicanism? Let such a one lend an ear to what a gathering of Communist scientists in London in 1931 were saying. They knew

15. J.D. Bernal, *Marx and Science*, (New York; International Publishers, 1952), p.17.

that their system absolutely depended on a conviction that nothing in the universe can be motionless. If anything could be motionless, then the earth could be as the Bible says, and the game would be over! Note these quotes from that formal gathering of Communist "scientists":

- "Modern physics rejects absolute inertia."¹⁶
- "Teaching the self-movement of matter received its full development in the dialectical materialism of Marx, Engels, and Lenin."¹⁷
- F. Engels established "one of the basic theses of dialectical materialism, i.e., the inseparability of movement from matter...."¹⁸
- Notice the specialized role of Mathematics in all this: "This special mathematics -- the tensor analysis, the matrix calculus ..._has for the greater part been created by the physicists themselves."¹⁹
- "For Mathematics there is only one way out: conscious, planned reconstruction on the basis of materialist dialectics" [i.e., atheist philosophy resting on Copernicanism and Darwinism).²⁰
- "Proceeding from the Leninist theory...we in the Soviet Union shall *reconstruct the Mathematical sciences....*"²¹

The fact that the Copernican cosmology underpinning communism and humanism is erected totally on the phony authority of "reconstructed mathematics" is a fact that must be grasped without further delay. All who are really interested in exposing and bringing down the evolution myth must begin:

16. Dr. Joseph Needham, Fwd., "Marx's Theory on the Historical Process", *Science At The Crossroads*. (London: Frank Cass and Co., Ltd., 1971), p. 189.

17. *Ibid.*

18. *Ibid.*, p. 188.

19. *Ibid.*, pp. 215-216.

20. *Ibid.*, p. 225.

21. *Ibid.*, p. 229.

- a) To depend on the God behind the geocentric Word;
- b) Eschew their fears of "science falsely so-called" and
- c) Get informed and begin to attack the Copernican taproot of these deceptions masquerading as "science".

It's God's Word, after all, and He will not have it return to Him void on this Creation matter indefinitely (Isaiah 55:11). But Soviet communism is finished, someone objects, "so what's the big deal about what their scientists said?" The problem, Creationist friend, (not to ignore the little matter of the rise of Communist China to superstate status...) is that humanism is in place all over the world today and Humanism has *exactly the same roots in Copernicanism and Darwinism as Soviet Marxism had!* It's the same Bible destroyer as before, only now wearing a different hat. The whole world is ready to unite under a humanist new world order and usher in a humanist new age. The cards are dealt. It's a done deal. And the real purpose, the hidden agenda, of this incipient and insidious cardboard utopia about to descend on all of us is simply this, a one-world religion where all beliefs *except* Bible Christianity will be allowed. "Hate crime" laws now on the books are steadily broadening their scope to the end that they will be the instrument used to criminalize New Testament Christianity in the pagan new world order.

THE FORMATION OF THE MOON

Several recent discoveries about the moon support the creationist scenario for the formation of the sun, moon, and planets which scenario was presented at the 1992 Twin-Cities Creationist Conference. The video tape of Dr. Bouw's presentation is now available from the Biblical Astronomer. See "Introduction" (p. 3 of this issue) for a description of the tape and see the back cover of this issue for ordering details.

On March 16, 1999 NASA issued a press release (Release No. 99-43) entitled "Lunar Data Support Idea That Collision Split Earth, Moon." Written by David Morse of the Ames Research Center, Moffett Field, California, the release states (in part) that:

Analysis of data from NASA's Lunar Prospector spacecraft has confirmed that the Moon has a small core, supporting the theory that the bulk of the Moon was ripped away from the early Earth when an object the size of Mars collided with the Earth.

Scientists presented this result and other findings today in a series of papers at the 30th Lunar and Planetary Science Conference in Houston, TX. Their data show that the lunar core contains less than four percent of the Moon's total mass, with the probable value being two percent or slightly less. This is very small when compared with the Earth, whose iron core contains approximately 30 percent of the planet's mass.

The size of the core, based on orbital data of the Lunar Prospector satellite give a radius between 140 and 280 miles (220 and 450 kilometers). Magnetic data analyzed by Lon Hood of the University of Arizona, Tucson, suggest a core radius is 180 and 260 miles (300 and 425 kilometers). Compared to the earth's size and core, the moon's is small for its size.

The press release continues:

Similarities in the mineral composition of the Earth and the Moon indicate that they share a common origin. However, if they had simply formed from the same cloud of rocks and dust, the Moon would have a core similar in proportion to the Earth's. A third theory

[sic, only two are mentioned at all,] suggests that the moon was captured fully intact by the Earth's gravity.

Before the Apollo lunar landings there were three theories for the origin of the moon. These were 1) the earth and moon formed from the same cloud in the same orbit, 2) the moon formed elsewhere, was kicked out of its orbit by some unknown mechanism and was subsequently captured by the earth, and 3), the earth originally spun so fast that the moon was torn from it by centrifugal force, leaving the Pacific Ocean basin as a result. Although popular well through this century, the latter idea is totally impossible.

Apollo was designed to determine which of the remaining two was correct. Apollo found out that rocks are rocks, that is, earth rocks and moon rocks are basically alike. Since for the last 150-odd years the episteme of modern science (falsely so-called) is the de-Godifying of the universe, one is not allowed to conclude from that that the earth and moon had a common Creator. Atheistic science, never free-thinking, is forced to conclude that the earth and the moon formed from the same cloud. (The capture mechanism may be resurrected once it is found that Mars rocks are basically like earth and moon rocks. But it, too, offers no real solution to the origin of the moon.)

The press release continues by describing what happened after the Apollo program's rocks were examined:

Based on information first gathered during the Apollo era, scientists suggested that the Moon was formed when a Mars-sized body hit the Earth during its earliest history. "This impact occurred after the Earth's iron core had formed, ejecting rocky, iron-poor material from the outer shell into orbit," Binder explained. "It was this material that collected to form the Moon."

OK, I'll bite. So the moon is earth-like, and the earth is earth-like, but what happened to the material which made up the Mars-sized body which hit the earth and, presumably, was not earth-like? And whence the Mars-sized body? Apparently it was made of sterner stuff, for it left behind no trace of itself. NASA does admit that this is not a proof, and that further analysis of Lunar Prospector data is necessary to:

... refine the exact size of the lunar core and the amounts of elements like gold, platinum and iridium in lunar rocks -- all of which are concentrated with metallic iron ... [and] to pin down for good if the "giant impact" model of the formation of the Moon is correct, or if the Moon formed in a different manner.

Among the other results which came from the conference is the apparent association between large, localized magnetic fields and large lava-filled basins. For some time evidence has been surfacing linking strongly magnetized concentrations on one side of the moon with lava-filled basins on the opposite side. The new results find magnetic fields opposite Mare Crisium [sic], Mare Serenitatis, and Mare Imbrium, three of the seas (mare) which cover the northern area of the moon's near side. Although no evolutionary theory has been proposed to explain how this could come to be, the creation scenario proposed in *Biblical Astronomer* ("Creation of the Universe," No. 79, pg. 10, 1997) can readily account for it. In that scenario, as the sun, moon, and planets were created, their elements are formed *in situ* (in place) from the inside out, and the heat thus produced is immediately dissipated by thermalized radiation, and radiated away into space. The remnant of that dissipated thermalized (converted to heat) radiation is the famous 3K black-body radiation which is allegedly left over from the big bang.

If during the formation of the moon, asymmetric cooling happened, that is, the heat of the creation event found it easier to flow out to the basins, then the observed magnetic effect can be accounted for. By that method, the basins stayed hotter longer, and the molten rocks had time to form a smooth surface. The cooling itself would drive electromagnetic fields which would freeze into the newly-formed rapidly cooling material. The material which would cool fastest would be the highlands and richly cratered areas opposite the mare.

Another piece of evidence supporting the above creation scenario was presented at the 30th Lunar and Planetary Science Conference. The press release reported this as follows:

Results of efforts to map the composition of the lunar crust have surpassed the expectations of the spectrometer team, led by Dr. William Feldman of the Department of Energy's Los Alamos National Laboratory in New Mexico. Data obtained are so good that the distribution of thorium has been mapped with a resolution of 36 miles

(60 kilometers). At this amount of detail, scientists can detect individual deposits rich in thorium and related elements. Their current observations suggest that thorium was excavated by impacts of asteroids and comets, and then distributed around craters, rather than being deposited by volcanic activity.

Although the thorium distribution can be partially accounted for by splashing by of meteor impacts, it can also be accounted for by splashing of a boiling lunar surface at the time of creation. Furthermore, *in situ* element formation more readily explains the abundance of heavy elements in the crust or surface regions of the moon. In the slow-cooling evolutionary model these heavy elements should have sunk to the centers of the moon and earth, and so the crust should be depleted of them. Instead, the radioactive material in the crust of the earth is sufficient to account for all the heat reaching the surface, *without* any contribution from the radioactive materials which would have sank to the earth's core. The creationist scenario for the formation of the heavenly bodies can thus readily account for the three Lunar Prospector observations for which evolution has yet to find an explanation.

READERS' FORUM

On the Star of Bethlehem

Your 1998 article "The Star of Bethlehem" [*Biblical Astronomer* no. 86] is quite exhaustive. The quantity of historical facts included certainly shows extensive research. Furthermore, you can make your own Greek translations. Even so, the emphasis on certain scriptural citations could have more significance than they have been credited with. Emphasis as we both understand constitutes personal preference. But perhaps a different view point is not unworthy.

The advent of Jesus Christ is the most significant event in all history. Genesis 1:14 which you cited states that lights in the heavens are "for signs and seasons and for days and years." Certainly for the greatest event in all history there should be an impressive sign. Furthermore, it has to be a sign that the Magi can interpret. Eclipses come and go. A nova is a singular event, but unless it can be determined what the Chinese star (Crab Nebula) signifies, it is doubtful that the Magi could use a nova event. And as you pointed out, there really isn't a nova candidate.

Planetary conjunctions can constitute an impressive sign framed along with a constellation and there is one of these. According to the astronomer at Griffith Observatory, the planets actually overlapped slightly during the June 17, 2 B.C. conjunction, forming a single star. So this is a particularly impressive sign that took place in the western sky. Interest could have built up for a period of days as the planets approached each other.

But the Scriptures seem to say that the star was seen in the east. Quoting from the King James Version, Matt. 2:1, 2, & 9:

... there came wise men from the east to Jerusalem,
Saying, Where is he that is born King of the Jews? for we have seen
his star in the east, and are come to worship him.

... and, lo, the star, which they saw in the east, went before them, till
it came and stood over where the young child was.

When one looks east after dark, the stars all ascend. Since a star rising in the east does not provide a notable sign, the same verse in the *New King James Version* will be considered.

... wise men from the East came to Jerusalem, saying, "Where is He who has been born King of the Jews? For we have seen His star in the East and have come to worship Him.

... and behold, the star which they had seen in the East went before them, till it came and stood over where the young Child was.

This shows that the translators of the *New King James Version* capitalized East to indicate a geographical location, rather than a direction where stars rise. It cannot be determined what the original translators of the King James Version thought since they capitalized neither the east nor the personal pronouns that refer to the Lord.

The actual birth of Christ had no special star visible in Bethlehem. Luke 2:8-20 states it was an angel that informed the shepherds of the Savior's birth. The miracle announced to Mary by Gabriel was the conception of the Son of God (Luke 1:31). So the planetary-conjunction sign would have signified the conception. Using this interpretation and the fact that it takes 38 weeks from conception to birth, the Lord would have been born about March 9, 1 B.C. [The Jewish month] Nissan started with first crescent visibility on April 6, 1 B.C. Jesus was crucified on April 2, 33 A.D., so He would have been slightly older than 33 years at the time of His crucifixion.

The earliest that the wise men arrived in Bethlehem would have been after Mary's purification and the events recorded in Luke 2:25-38. The account that Luke assembled from eyewitnesses does not include the flight to Egypt, so Luke 2:39 concords with Matthew 2:23. Now I personally prefer this interpretation because it agrees better with the solar-planetary alignment you located that occurred on October 15, 4001 B.C. The March date puts Christ's birth in the last year of the fourth millennium, about six months before the start of the fifth millennium. Somehow this time-mesh seems preferable to the birth event occurring in the autumn of 2 B.C.

Best regards,
John Read

The immediate problem with that birth date is that Jesus would have been born after the death of Herod.

As for the meaning of "east," Bible critics make much of the Greek *en te anatole* here, claiming that this is a technical term meaning heliacal rising. They then go on to proclaim that the translators of the King James Bible mistranslated the term, not knowing of this technical definition. But such is not true, for the criticism is groundless. The phrase "in the east" must of necessity refer to the prior noun, the star, rather than to the subject of the sentence (the wise men). Hence the star was seen in the eastern sky, which can only be the morning sky, here. I have been unable to trace the criticism back any further than Keller's book, originally in German, which was translated into English by William Neil in 1956 under the title *The Bible as History*, (NYC: Wm. Morrow and Co.), page 350. Keller's original criticism was directed against the German translations, but Neil applied the criticism to the KJB in translation. The German bibles use *Morgenland*, which literally means "morning country," but even in German the phrase is placed to describe the star and not the location of the wise men. This latter is the case for all Reformation translations and so the criticism is spurious.

PANORAMA

When was the Crab Nebula Created?

The Crab Nebula, which houses one of the first pulsars discovered, is the product of a supernova, the explosion of a star several times the sun's mass. The Chinese recorded the new star and the usual date, based on the Chinese observations, is about 4 July, A.D. 1054. What is a bit unusual about that is why are there no other observations of the supernova?

Three astronomers from Case Western Reserve University think that they have found the answer.¹ Their abstract of a paper presented at the Ohio Association of Science reads as follows:

In this paper we present a sequence of astronomical events which minimize the apparent conflicts among various 11th century references to celestial events associated with the appearance of the supernova of 1054 A.D. We find that virtually all conflicts can be removed if the explosion date for the supernova is several months earlier than the commonly noted date of July 4th. The earlier date allows a number of recently noted European references to be connected to a stellar event prominent in the evening sky of April and May. An explosion date of April or early May of that year combined with the Chinese observations suggest that the phenomena was a Type Ia supernova at the present location of the Crab Nebula. The presence of European references to an evening event only serves to heighten the mystery surrounding the lack of references to the subsequent appearance of the supernova in the morning sky during June and later. This supports the view that the absence of late European records of the morning event may be associated with the Eastern Schism of 1054 A.D.

1. G. W. Collins II, W.P. Claspy, J.C. Martin, 1999. "A Re-consideration of the Historical References to the Supernova of 1054 A.D.," *Ohio Journal of Science*, 99(1):A-30.

Was Tycho Brahe Murdered?

The following was from a web page sent your editor from Marshall Hall. The original article was written in 1996 by Jan Pallon of Sweden. More I do not know.

The astronomer Tycho Brahe (1546-1601) garnered a reputation as the keenest observer before the invention of the telescope. His observations were so good that Kepler was able to detect that the basic motion of the planets was not circular (as Copernicus and Ptolemy had assumed), but instead was elliptical.

Tycho made his careful observations intending to discredit Copernicus's heliocentric model. On his death bed he made his protégé, Kepler, promise to present his observations in Tycho's own geocentric model (see front cover). Although Kepler did present Tycho's model, he also included a disclaimer distancing himself from his master's geocentric model.

Although Tycho was a favorite of the Danish king, Frederick II, and after leaving his protectorate for the protectorate of the emperor Rudolf in Prague, Tycho was not very popular. He had a bad temper because of which he lost his own nose in a duel. He is also characterized as arrogant and proud. Yet in the last year of his life he softened considerably, so much so that it puzzled Kepler. (This is partial evidence that he may have come to faith in Christ, the only major astronomer of the time to do so.) Now new evidence has surfaced surrounding the circumstances of his death.

While in Prague, Tycho attended a banquet. Not surprisingly after several hours of eating and drinking, Tycho needed to let out water, but it was impolite to simply leave the emperor's banquet for such a reason. So Tycho suffered and did not leave until it was too late. He developed a fever and attacks of giddiness and finally died on 24 October, 1601. Most historians think he died of urinary poisoning; that his bladder burst.

About three or four years ago, strands of his beard, which had been stored in Prague, were analyzed by atomic absorption analysis for lead, mercury, and arsenic, by the Laboratory of Forensic Chemistry in Copenhagen. The lab found high levels of lead and, especially mercury. Additional strands were sent to Lund University's nuclear microprobe facility in Sweden, which device allows three-dimensional analysis of the the concentrations of the poisonous chemicals.

One of the strands, which still had the hair root, showed a very high local concentration of mercury (Hg). The mercury was concentrated close to the hair root. Scanning across the hair showed further concentration in the middle, where the blood flowed, so that the source of the mercury must have been the blood. If the hair grew up to the time the hair was removed from the body, the mercury entered Tycho's body no more than a day before his death.

Now we do know that Tycho was working with elements such as mercury and arsenic in his chemistry and pharmaceutical experiments, but that in itself would not explain the sudden rise of mercury at the root of the hair (exposure of less than one hour). There are three possible explanations. He may have tried some concoction in the hope of curing his sickness, or he may have accidentally ingested it, or he was murdered. (It is unlikely he committed suicide because there were more pleasant ways at his disposal.

Hubble Refines Hubble Constant

In a May 25, 1999 press release, NASA reported that one of their teams refined the value of the Hubble constant, the rate at which the universe expands in the region about the Milky Way. The values usually published range from 25 to 100 kilometers per second per megaparsec. This gives an "expansion age" for the universe of 8 to 20 billion years. From the press release:

[The] spiral galaxy NGC 4603 [is] the most distant galaxy in which a special class of pulsating stars called Cepheid variables have been found. It is associated with the Centaurus cluster, one of the most massive assemblages of galaxies in the nearby universe. The Local Group of galaxies, of which the Milky Way is a member, is moving in the direction of Centaurus at a speed of more than a million miles an hour under the influence of the gravitational pull of the matter in that direction.

... Only the very brightest stars in NGC 4603 can be seen individually, even with the unmatched ability of the Hubble Space Telescope to obtain detailed images of distant objects. Much of the diffuse glow comes from fainter stars that cannot be individually distinguished by Hubble. The reddish filaments are regions where clouds of dust obscure blue light from the stars behind them.

This galaxy was observed by a team affiliated with the HST Key Project on the Extragalactic Distance Scale. Because NGC 4603 is much farther away than the other galaxies studied with Hubble by the Key Project team, 108 million light-years, its stars appear very faint from the Earth, and so accurately measuring their brightness, as is required for distinguishing the characteristic variations of Cepheids, is extremely difficult. At this distance some non-variable stars may by chance appear to grow brighter and fainter in the same fashion as Cepheids due to the physical impossibility of perfect measurements of such dim objects.

Determining the distance to the galaxy required an unprecedented statistical analysis based on extensive computer simulations. Researchers found 36-50 Cepheids and used their observed properties to securely determine the distance to NGC 4603. These measurements indicate that when the expansion of the universe and the motion of the Local Group are accounted for, the Centaurus cluster is very nearly at rest compared with the surrounding regions. It is part of the cause of the rapid motions in the nearby universe, rather than being strongly pulled by other concentrations of matter. Observations of distant Cepheids such as those in NGC 4603 also help astronomers to precisely measure the expansion rate of the universe.

The conclusion of the team was that the Hubble constant is 70 km/sec/Mpc, a value which leads to an uncomfortably young universe as far as evolutionary theory is concerned. Evolutionists, particularly evolutionary astronomers, feel more comfortable with 25 to 30 since then the "oldest" stars are younger than the universe, at least.

CREDO

The Biblical Astronomer was founded in 1971 as the Tychonian Society. It is based on the premise that the only absolutely trustworthy information about the origin and purpose of all that exists and happens is given by God, our Creator and Redeemer, in his infallible, preserved word, the Holy Bible commonly called the King James Bible. All scientific endeavor which does not accept this revelation from on high without any reservations, literary, philosophical or whatever, we reject as already condemned in its unfounded first assumptions.

We believe that the creation was completed in six twenty-four hour days and that the world is not older than about six thousand years. We maintain that the Bible teaches us of an earth that neither rotates daily nor revolves yearly about the sun; that it is at rest with respect to the throne of him who called it into existence; and that hence it is absolutely at rest in the universe.

We affirm that no man is righteous and so all are in need of salvation, which is the free gift of God, given by the grace of God, and not to be obtained through any merit or works of our own. We affirm that salvation is available only through faith in the shed blood and finished work of our risen LORD and saviour, Jesus Christ.

Lastly, the reason why we deem a return to a geocentric astronomy a first apologetic necessity is that its rejection at the beginning of our Modern Age constitutes one very important, if not the most important, cause of the historical development of Bible criticism, now resulting in an increasingly anti-Christian world in which atheistic existentialism is preaching a life that is really meaningless.

If you agree with the above, please consider becoming a member. Membership dues are \$20 per year. Members receive a 20% discount on all items offered for sale by the Biblical Astronomer.

To the law and to the testimony: if they speak not according to this word, it is because there is no light in them.

— Isaiah 8:20

TITLES AVAILABLE FROM THE B.A.

Orders can be honored only if accompanied by payment in United States currency either by cheque drawn on a U.S. bank or cash. All prices are postpaid. Orders outside North America, please add \$2.

BOOKS AND TAPES

The Book of Bible Problems. The most difficult "contradictions" in the Bible are answered without compromise. "A classic," writes Gail Riplinger. 266 pages, indexed. \$12.00.

Geocentricity The best, most comprehensive book on the topic of geocentricity. 400 pages, 45 figures, scripture and general indexes. In Europe, *Geocentricity* may be purchased for £12.50 (postpaid in the U.K., postage by quotation otherwise) from Brian V. Lamb, Quarryside, Castletown, Caithness, Scotland KW14 8SS. \$15.00

The Geocentric Papers, a compendium of papers, most of which appeared in the *Bulletin of the Tychonian Society*. A technical supplement to *Geocentricity* including articles on geocentricity, creationism, and the Bible itself. (120 pages 8.5x11 gluebound.) \$15.00

New-Age Bible Versions, by Gail Riplinger. The critics attack the author, but they never address the main issue, the occult influence in the modern versions. A real eye-opener. 600+ pages. \$15.00

Is Geocentricity a Dangerous Error? A Biblical and Scientific Debate. A debate between Martin Selbrede and Dr. Don DeYoung, former editor of the *Creation Research Society Quarterly*. \$6.00

Geocentricity: An audio tape interview with Prof. Jim Hanson. \$6.00

Geocentricity Video Tape. Martin Selbrede gives a first rate presentation of geocentricity. Good quality tape. American VHS only. \$20.00

NEW *A Creationist Scenario for the Creation.* Dr. Bouw presents a scientific approach to the creation act demonstrating that creationism is scientific. American VHS only. \$20.00

NEW *Thinking Psych-economically Interview.* Dr. Arthur Sharron interviews Dr. Bouw on the scientific inerrancy of scripture and the decline of Biblical authority. (Two programs.) American VHS only. \$20.00